



## Hospinnomics annual workshop

### *“Public decisions versus individual preferences”*

September 19<sup>th</sup> – 20<sup>th</sup>, 2016

#### Purpose and general theme

Decision-makers, when choosing to adopt innovation, are faced with the question of whose preferences should prevail: those of individual patients or those of the general public? While clinicians and patients' representative are more likely to give weight to patients' preferences, economists bring collective preferences to the fore. Another important issue is the fact that individual preferences change over time and adjust to illness and handicap, which constitutes an important challenge for preference revelation and measurement. Well-being and altruism are also central to understanding behaviour, particularly in the healthcare field. The purpose of this conference is to address these questions in order to identify the trade-offs between individual and collective preferences and the way public decisions are made. Behavioural economics brings new insights on these issues, with a variety of techniques (field, laboratory or discrete choice experiments - DCE). Comparisons will be encouraged with other fields of application such as environment or road safety and the analysis will extend to the study of attitudes towards risk and risk management policies.

#### Organisation

The workshop is organised in three panels (Monday 19<sup>th</sup> afternoon) and an interactive session (Tuesday 20<sup>th</sup> morning).

A **guest lecture** will be given on the conference topic by Professor James Hammitt, from Harvard Center for Risk Analysis, US.

**The first panel** will present the methods used to evaluate the benefits and costs of public interventions and the role of individual preferences in their design.

**The second panel** presents new methods drawn from behavioural economics which aim at characterizing individual preferences. The discussion will address the potential for application in health related areas such as adoption of risky behaviour, screening decisions, access to diagnostic, compliance with treatment.

**The third panel (in French)** brings together economists and decision-makers in order to discuss the obstacles and prospects encountered in the application of these new methods to the evaluation of public health care interventions.

The reception follows on with a **piano-concert by Mi-Young Lee**.

**The interactive session takes place on Tuesday morning, September 20<sup>th</sup>** and brings together researchers from various disciplines and decision-makers to identify future collaborations on three main issues partly addressed the previous day (experiments in health and healthcare, evaluation of healthcare technologies, providers' competition).

**Venue: Hotel Scipion, 13 rue Scipion, 75005 Paris**

# Monday, September 19<sup>th</sup>

## 13.00 Registration and 'café gourmand'

### 13.30 Introduction

**Pierre Corvol** (Chair, Hospinnomics Scientific Advisory Board)

**Pierre-Yves Geoffard** (Director, Paris School of Economics – PSE)

### 13.45 Guest lecture

**James Hammitt**: (Professor of Economics and Decision Sciences, Director, Harvard Center for Risk Analysis, US)

### 14.30 Panel 1: Understanding public decision-making in health

**Chair – Randall Ellis** (Boston University, US)

**Audrey Laporte** (Toronto University, Canada)

**Mark Stabile** (INSEAD, France)

**Agnès Couffinhal** (OECD)

**Daniel Herrera** (Hospinnomics, PSE/AP-HP, France)

### 15.45 Panel 2: Understanding individual choices in health

**Chair - Pierre-Yves Geoffard** (PSE, France)

**Mandy Ryan** (University of Aberdeen, UK)

**Nicolas Jacquemet** (PSE, France)

**Mattéo Galizzi** (London School of Economics, UK)

**Andrew Clark** (PSE, France)

### 17.00 Coffee break

### 17.30 Panel 3: La traduction dans les faits (Panel in French)

**Chair - Lise Rochaix** (PSE, Hospinnomics)

**Luc Baumstark** (GATE, Université de Lyon 2, France)

**Ariane Dupont Kieffer** (PHARE, Université de Paris 1 Panthéon-Sorbonne, France)

**Jean-Michel Josselin** (Université de Rennes 1, France)

**Giovanna Marsico** (Secrétariat Général du Ministère des Aff. Sociales et de la Santé - Déléguée au Service Public d'Information en Santé)

**Nicolas Boissel** (AP-HP, France)

### 18.45 Préférences individuelles : le regard du muséographe

**Carolyne Krummenacker** (consultante spécialisée dans le secteur culturel)

### 19.00 Conclusion

**Martin Hirsch** (Director General, AP-HP)

*19.30* Piano Concert

**Mi-Young Lee**

*20.30 – 22.00* Reception at Hotel Scipion

## Tuesday, September 20<sup>th</sup>

*9.00* Introduction

**Lise Rochaix** (PSE, Hospinnomics)

*9.30* Working group 1: Behavioral economics: applications

Chair – **Randall Ellis**

**Mandy Ryan, Nicolas Jacquemet, Christine Le Clainche**

*10.30* Working group 2: Evaluation of health care interventions

Chair – **Audrey Laporte**

**Valérie Clément, Isabelle Durand-Zaleski, Jean-Claude K. Dupont**

*11.30* Working group 3: Competition among hospitals

Chair – **James Hammitt**

**Philippe Choné, Zeynep Or, Erwann Paul**

*12.30* Conclusion

**Pierre Corvol** (Chair, Hospinnomics Scientific Advisory Board)

## Speakers



### Luc Baumstark

Lecturer at the University of Lyon 2 (GATE - CNRS).



### Nicolas Boissel

Professor (PU-PH), head of the haematology unit for adolescents and young adults (AYAs) at Saint-Louis hospital.



### Philippe Choné

Professor of Economics at ENSAE since 2010.



### Andrew Clark

Professor of Economics at the Paris School of Economics.



### Valérie Clément

Lecturer in Economics at the University of Montpellier 1.



### Pierre Corvol

Professor at College de France (1989-2012) and Member of the French Academy of Sciences. Chairman of Hospinomics' Scientific Advisory Board.



### Agnès Couffinhal

Senior economist at the OECD.



### Ariane Dupont-Kieffer

Professor of Economics at the Paris 1 Panthéon-Sorbonne University.



### Jean-Claude K. Dupont

Deputy Director at Hospinomics.



### Isabelle Durand-Zaleski

Professor of Public Health, director of the URC ECO Ile-de-France.



### Randall Ellis

Professor in the Department of Economics at Boston University.



### Matteo M. Galizzi

Assistant Professor in behavioural science at London School of Economics.



### Pierre-Yves Geoffard

Professor in Economics, director of Paris School of Economics (PSE).



### James Hammitt

Professor of Economics and decision sciences at Harvard School of Public Health.



**Daniel Herrera**

Researcher at Hospinnomics.



**Martin Hirsch**

Director General of Assistance Publique – Hôpitaux de Paris (AP-HP).



**Nicolas Jacquemet**

Professor of Economics at the University Paris 1 Panthéon-Sorbonne and PSE.



**Jean-Michel Josselin**

Professor of Economics at the University of Rennes 1.



**Carolyne Krummenacker**

Senior consultant, specialised in museology.



**Audrey Laporte**

Associate Professor of Health Economics at institute for Health Policy Management & Evaluation, University of Toronto.



**Christine Le Clainche**

Professor of Economics at the University of Lille 2.



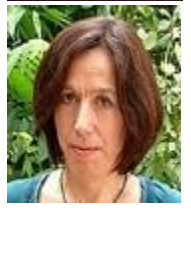
**Mi-Young Lee**

Concert pianist.



**Giovanna Marsico**

Member of the General Secretariat at the Ministry of Health, in charge of patients' information (Service Public de l'Information en Santé).



**Zeynep Or**

Research director at IRDES.



**Erwann Paul**

Deputy Director of the Sud Francilien hospital.



**Lise Rochaix**

Professor of Economics at the University Paris 1 Panthéon-Sorbonne and PSE. Chair holder of Hospinnomics.



**Mandy Ryan**

Professor of Health Economics, director of the Health Economics Research Unit (HERU) at the University of Aberdeen.



**Mark Stabile**

Professor of economics at INSEAD.